

GeneTel Laboratories, LLC *Leader in Proteomics Abs and Abs Arrays*
1202 Ann Street, Madison, WI 53713 Phone 877-248-4316 Fax 608-257-1385 Email info@genetel-lab.com

Product: Chicken Anti-human GFAP polyclonal antibody, affinity purified.

Catalog Number: CN0022

Lot Number: 120524

Size: 0.1ml Abs, 0.45mg/ml in PBS with 0.02% Na Azide

Immunogen: Synthesized peptide from human GFAP

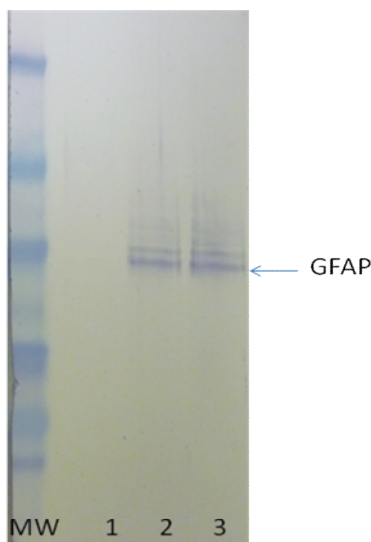
Specification: CN0022 binds to GFAP band at a MW of about 50 KD in a Western Blot analysis.

Suggested Usage: The product can be used at 1:1,000 to 1:5,000 for immunoblot testing. User needs to optimize the concentrations in assay. The product can be used in combination with GeneTel's anti-chicken IgY conjugates in Western Blot analysis. This product may react with GFAP from other mammalian species.

Short Term Storage: 2-8°C for one week.

Long Term Storage: -20°C as an undiluted liquid for up to two years.

Please feel free to call us if you have any question regarding to this product or any other GeneTel's products.



Western Blot analysis of CN0022 chickent anti-huGFAP on human GFAP.
CN0022 1:5000; Ap-Bovine anti-chicken IgY 1:10000; 3% BSA in the blocking and antibody buffer.). Lane 1,2 and 3, 10ng, 100ng and 500ng GFAP respectively.