

## Genetel Laboratories, LLC *Leader in Proteomics Abs and Abs Arrays*

1202 Ann Street, Madison, WI 53713 Phone 877-248-4316 Fax 608-257-1385 Email info@genetel-lab.com

**Product:** Rabbit Anti-phospho-Serine Polyclonal Antibodies, affinity purified.

**Catalog Number:** CP0016

**Lot Number:** 70420

**Size:** 100ug, 250ug/ml in TBS with 0.1% Na Azide

**Immunogen:** Phosphoserine-KLH and phosvitin mixture

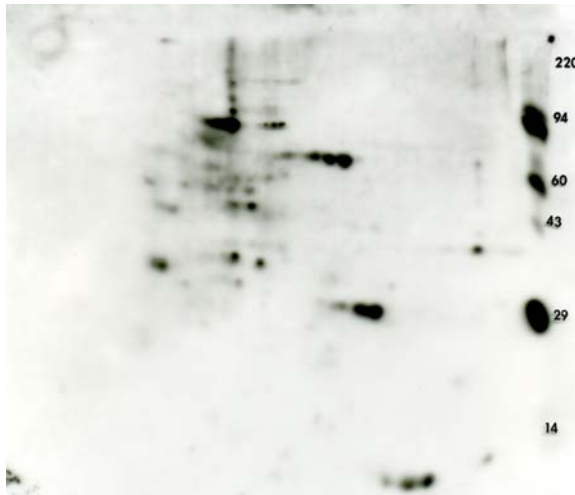
**Suggested Usage:** The product can be used at 1:500 to 1:1,000 for ELISA, 1:200-1:1,000 for Western Blot testing and 1ug/mg sample for IP. Customer using ECL system may need to further dilute the Abs. User needs to try out the titration for optimal concentration.

**Short Term Storage:** 2-8°C for one week.

**Long Term Storage:** -20°C as an undiluted liquid for up to two year.

**Note:** For in vitro research use only, not for diagnostic or therapeutic use.

Please feel free to call us if you have any question regarding to this product or any other GeneTel's product.



2-D Western Blot Analysis: Rat liver total proteins (200ug) were run on 2D electrophoresis and were transferred to PVDF membrane. The antibody CP0016 was diluted to 1:10,000 and the antibody binding was detected with an ECL system.