

Product: Rabbit Anti-ETrB (EDNRB, ETBR) Endothelin Receptor Type B, affinity purified, mouse, human, rat specific.

Catalog Number: OA0060

Lot Number: 10830

Size: 0.1mg affinity purified Abs, 1mg/ml in PBS with 0.02% Na Azide

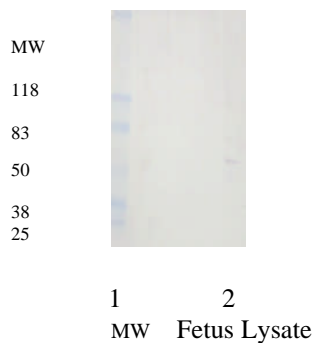
Immunogen: Human or mouse ETrB peptide aa299-313 (CEMLRKKSQMQUALND).

Specification: OA0060 binds to a protein band at a MW of about 51KDa of mouse fetus protein lysate in a Western Blot analysis. A weaker band at about 75KDa may be observed. We are not sure if this weaker band is a modified ETrB protein. The product may react with ETrB form other mammalian species.

Suggested Usage: The product can be used at 1:1,000 to 1:5,000 for immunoblot testing. User needs to optimize the concentrations in assay. The product can be used in combination with GeneTel's anti-IgY conjugates such as RCYHRP (anti-IgY HRP) and RCYAP (anti-IgY AP) Western Blot analysis.

Short Term Storage: 2-8°C for one week.

Long Term Storage: -20°C as an undiluted liquid for up to two year.
Please feel free to call us if you have any question regarding to this product or any other GeneTel's product.



Western Blot analysis of OA0060 rabbit anti-ETrB (1:2,000) on mouse fetus total protein lysate (20ug, lane #2). The Abs binds to the mouse ETrB, a protein at about 51 KDa molecular weight.