

GeneTel Laboratories, LLC *Leader in Proteomics Abs and Abs Arrays*
1202 Ann Street, Madison, WI 53713 Phone 877-248-4316 Fax 608-257-1385 Email info@genetel-lab.com

Product: Chicken Anti-human MRPS6 (mitochondrial ribosomal protein S6) , total IgY

Catalog Number: OA0087

Lot Number: 120910

Size: 0.2ml Abs, 1mg/ml in PBS with 0.02% Na Azide

Immunogen: recombinant protein

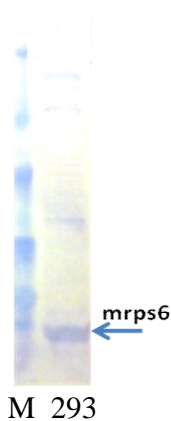
Specification: OA0087 reveals a specific band with a MW of 17~19 KD in a Western Blot analysis, as predicted.

Suggested Usage: The product can be used at 1:500 to 1:5000 for immunoblot testing. User needs to optimize the concentrations in assay. The product can be used in combination with GeneTel's anti-chicken IgY conjugates in Western Blot analysis. This product may react with homologues from other mammalian species.

Short Term Storage: 2-8°C for one week.

Long Term Storage: -20°C as an undiluted liquid for up to two years.

Please feel free to call us if you have any question regarding to this product or any other GeneTel's products.



Western Blot analysis of OA0087

M: protein markers

293: HEK293 lysate

1st antibody: OA0087 (2ug/ml)

2nd antibody: Rabbit anti-chicken IgY-AP

Developed with chromogenic substrate.