

**GeneTel Laboratories, LLC** *Leader in Proteomics Abs and Abs Arrays*  
1202 Ann Street, Madison, WI 53713 Phone 877-248-4316 Fax 608-257-1385 Email info@genetel-lab.com

**Product:** Rabbit Anti-human SOD1 polyclonal Abs, affinity purified, may react with SOD1 from other species such as bovine etc.

**Catalog Number:** OA0090

**Lot Number:** 121218

**Size:** 0.1ml affinity purified rabbit Abs in PBS with 0.02% Na Azide

**Immunogen:** human SOD1 peptide (C-terminus)

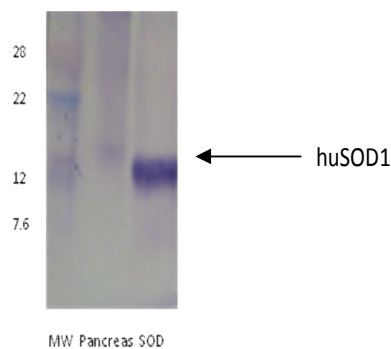
**Specification:** OA0090 binds to SOD1 band at a MW of about 16 KD in a Western Blot analysis.

**Suggested Usage:** The product can be used at 1:5,000 to 1:10,000 for immunoblot testing or ELISA. User needs to optimize the concentrations in other immuno- assays. The product can be used in combination with GeneTel's anti-rabbit IgG conjugates in Western Blot analysis. This product may react with SOD1 from other mammalian species.

**Short Term Storage:** 2-8°C for one week.

**Long Term Storage:** -20°C as an undiluted liquid for up to two years.

Please feel free to call us if you have any question regarding to this product or any other GeneTel's products.



**Western Blot analysis of OA0090 rabbit anti-huSOD1 on human pancreas and bovine SOD protein.**

Loading amount: 10ug of human pancreas total protein or 50ng bovine SOD protein.

1<sup>st</sup> antibody: OA0090 at 1:5,000;

2<sup>nd</sup> antibody: donkey anti-rabbit IgG AP conjugate at 1:5000;

3% BSA in the blocking and antibody dilution buffer.