

GeneTel Laboratories, LLC *Leader in Proteomics Abs and Abs Arrays*
1202 Ann Street, Madison, WI 53713 Phone 877-248-4316 Fax 608-257-1385 Email info@genetel-lab.com

Product: Chicken Anti-human SOD1 isoform C111S polyclonal Abs, affinity purified, cross-react with bovine SOD1 that shares the same epitope.

Catalog Number: OA0091

Lot Number: 121217

Size: 0.1ml affinity purified chicken Abs in PBS with 0.02% Na Azide

Immunogen: human SOD1 C111S peptide or bovine SOD1 peptide (LSGDHSIIGR)

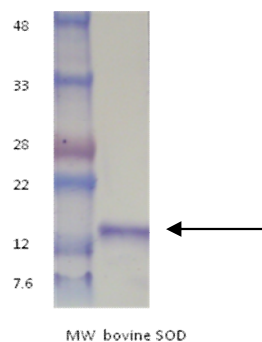
Specification: OA0091 binds to human C111S SOD1, and in a Western Blot analysis binds to bovine SOD1 band at a MW of about 14 KD.

Suggested Usage: The product can be used at 1:2,000 to 1:5,000 for immunoblot testing or ELISA. User needs to optimize the concentrations in other immuno- assays. The product can be used in combination with GeneTel's anti-chicken IgY conjugates in Western Blot analysis. This product may react with SOD1 from other mammalian species.

Short Term Storage: 2-8°C for one week.

Long Term Storage: -20°C as an undiluted liquid for up to two years.

Please feel free to call us if you have any question regarding to this product or any other GeneTel's products.



Western Blot analysis of OA0091 chicken anti-huSOD1 C111S isoform on bovine SOD1 protein that shares the same epitope as human C111S SOD1.

Loading amount: or 50ng bovine SOD protein.

1st antibody: OA0091 at 1:2,000;

2nd antibody: rabbit anti-chicken IgY AP conjugate at 1:5000;

3% BSA in the blocking and antibody dilution buffer.