

**GeneTel Laboratories, LLC** *Leader in Proteomics Abs and Abs Arrays*  
1202 Ann Street, Madison, WI 53713 Phone 877-248-4316 Fax 608-257-1385 Email info@genetel-lab.com

**Product:** Chicken Anti-human SOD2, total IgY

**Catalog Number:** OA0092

**Lot Number:** 130103

**Size:** 0.1ml or 0.5 ml (1mg/ml) in PBS with 0.02% Na Azide

**Immunogen:** human SOD2 protein

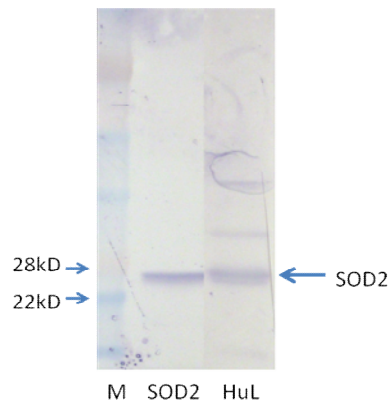
**Specification:** OA0092 binds to human SOD2 protein in Western blot analysis, it has not been tested on SOD2 from other species.

**Suggested Usage:** The product can be used at 1:200 to 1:1000 for immunoblot testing. User needs to optimize the concentrations in assay. The product can be used in combination with GeneTel's anti-IgY conjugates such as RCYHRP (Rabbit anti-IgY HRP) and RCYAP (Rabbit anti-IgY AP) in Western Blot analysis.

**Short Term Storage:** 2-8°C for one week.

**Long Term Storage:** -20°C as an undiluted liquid for up to two years.

Please feel free to call us if you have any question regarding to this product or any other GeneTel's products.



#### Western Blot analysis of OA0092

M: protein markers

SOD2: human SOD2 protein (0.1ug), OA0092 1:1000

HuL: human liver tissue lysate (40ug proteins), OA0092 1:500

2<sup>nd</sup> antibody: Rabbit anti-chicken IgY-AP, 1:10000

Developed with chromogenic substrate.