

GeneTel Laboratories, LLC *Leader in Proteomics Abs and Abs Arrays*
1202 Ann Street, Madison, WI 53713 Phone 877-248-4316 Fax 608-257-1385 Email info@genetel-lab.com

Product: Chicken antibody (IgY) specifically binds to bovine A2 beta casein protein.

Catalog Number: OA0102

Lot Number: 1192

Size: 100ul affinity pure IgY at 0.3mg/ml in PBS with 0.02% Na Azide

Immunogen: PGPIPNSLP peptide conjugated to KLH.

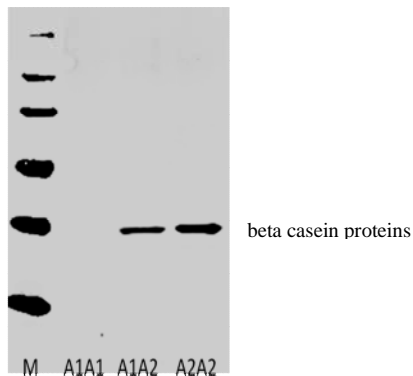
Specification: In western blot, this antibody specifically recognizes A2 but not A1 beta casein protein(s) in cow milk.

Suggested Usage: The product can be used for ELISA and immuno blotting. Dilution of 1:200-1:1000 is suggested for Western blot, the optimal concentration, however, needs to be experimentally determined by users.

Short Term Storage: 2-8°C for one week.

Long Term Storage: -20°C as an undiluted liquid for up to two years.

Please feel free to call us if you have any question regarding to this product or any other GeneTel's products.



Example

Western Blot Analysis of Chicken anti-A2 casein antibody

M: molecular marker

A1A1: 50nL milk from the cow baring A1/A1 alleles

A1A2: 50nL milk from the cow baring A1/A2 alleles

A2A2: 50nL milk from the cow baring A2/A2 alleles

1st antibody (OA0102) used at 1 ug/ml

2nd antibody (Cy3-Dokey anti Chicken IgY) used at 1:4000