

GeneTel Laboratories, LLC *Leader in Proteomics Abs and Abs Arrays*
1202 Ann Street, Madison, WI 53713 Phone 877-248-4316 Fax 608-257-1385 Email info@genetel-lab.com

Product: Chicken Anti-human ETS-related transcription factor Elf-3A (elf3A), total IgY

Catalog Number: OB0023

Lot Number: 70207

Size: 0.5ml Abs, 1mg/ml in PBS with 0.02% Na Azide

Immunogen: synthetic peptide

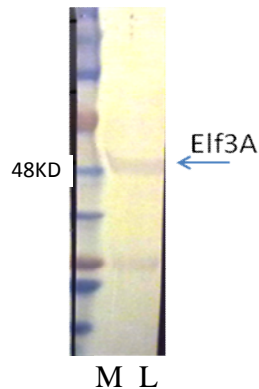
Specification: OB0023 reveals a positive band at expected position in a Western Blot analysis.

Suggested Usage: The product can be used at 1:500 to 1:2000 for immunoblot testing. User needs to optimize the concentrations in assay. The product can be used in combination with GeneTel's anti-chicken IgY conjugates in Western Blot analysis. This product may react with homologues from other mammalian species.

Short Term Storage: 2-8°C for one week.

Long Term Storage: -20°C as an undiluted liquid for up to two years.

Please feel free to call us if you have any question regarding to this product or any other GeneTel's products.



Western Blot analysis of OB0023

M: protein markers

Lanes L: human lung tissue cell free extract

1st antibody: OB0023 (1:1000)

2nd antibody: Rabbit anti-chicken IgY-AP

Developed with chromogenic substrate.