

GeneTel Laboratories, LLC *Leader in Proteomics Abs and Abs Arrays*
1202 Ann Street, Madison, WI 53713 Phone 877-248-4316 Fax 608-257-1385 Email info@genetel-lab.com

Product: Mouse monoclonal antibody against human Complement Factor D (CFD, Adipsin), antigen affinity purified

Cat. No. m-CFD-001

Lot Number: 552016

Concentration: 0.1mg/0.1ml in PBS with 0.02% Na Azide

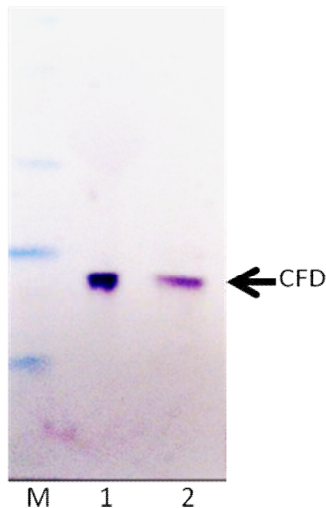
Immunogen: Recombinant human CFD protein

Specification: In western blot, this antibody specifically recognizes recombinant human CFD protein

Suggested Usage: The product can be used for ELISA and immuno blotting. Dilution of 1:1000-1:5000 is suggested for Western blot, the optimal concentration, however, needs to be experimentally determined by users.

Short Term Storage: 2-8°C for one week.

Long Term Storage: -20°C as an undiluted liquid for up to two years.



Western blot analysis of m-CFD-001

M: molecular weight

1: 50ng rhCFD protein

2: 50ng rhCFD protein spiked in HEK293 cell lysate (25ug protein)

1st antibody used at 1 ug/ml

2nd antibody used at 1: 5000 (AP conjugated Rabbit anti-mouse IgG)

Color developed with chromogenic substrate